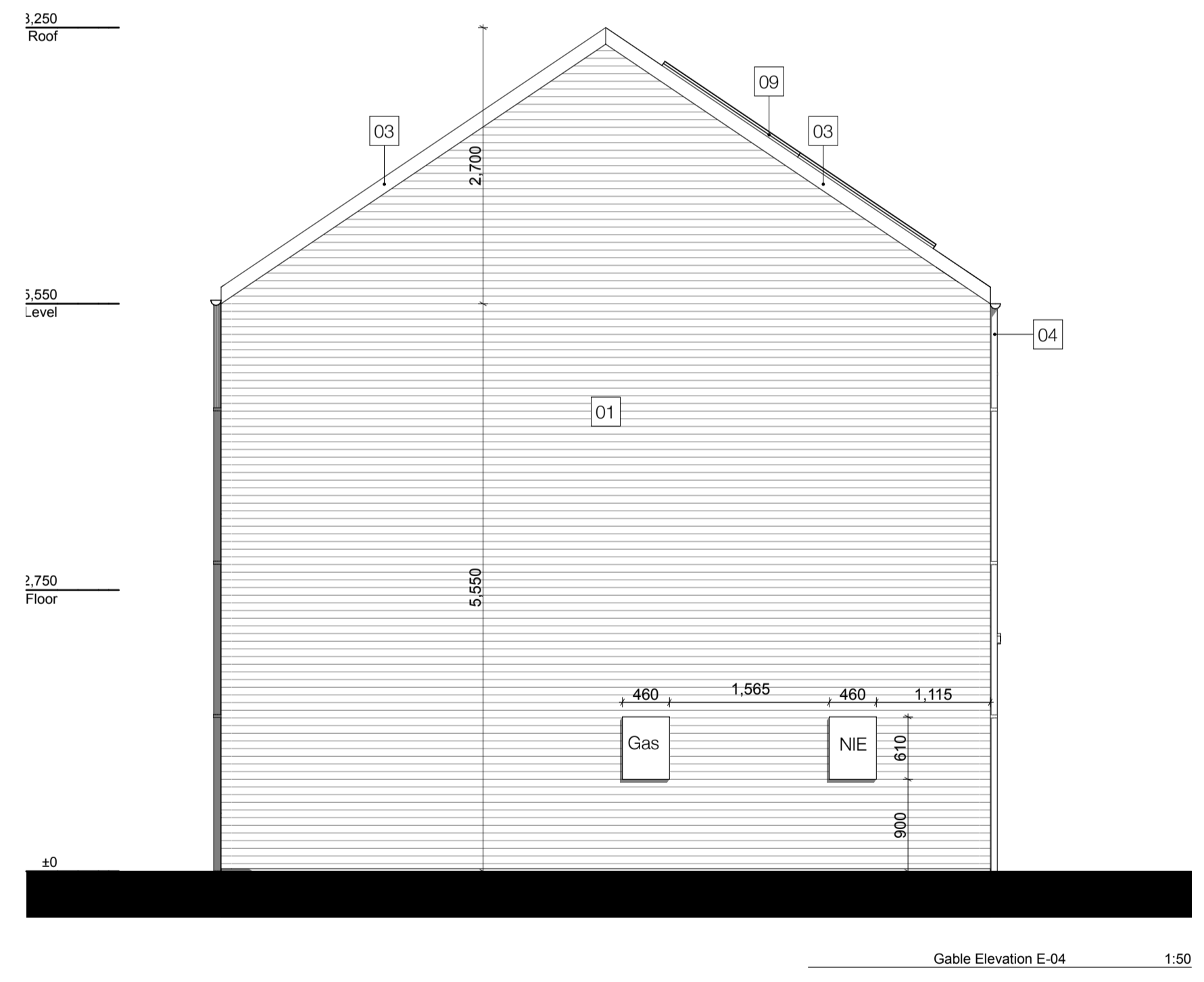
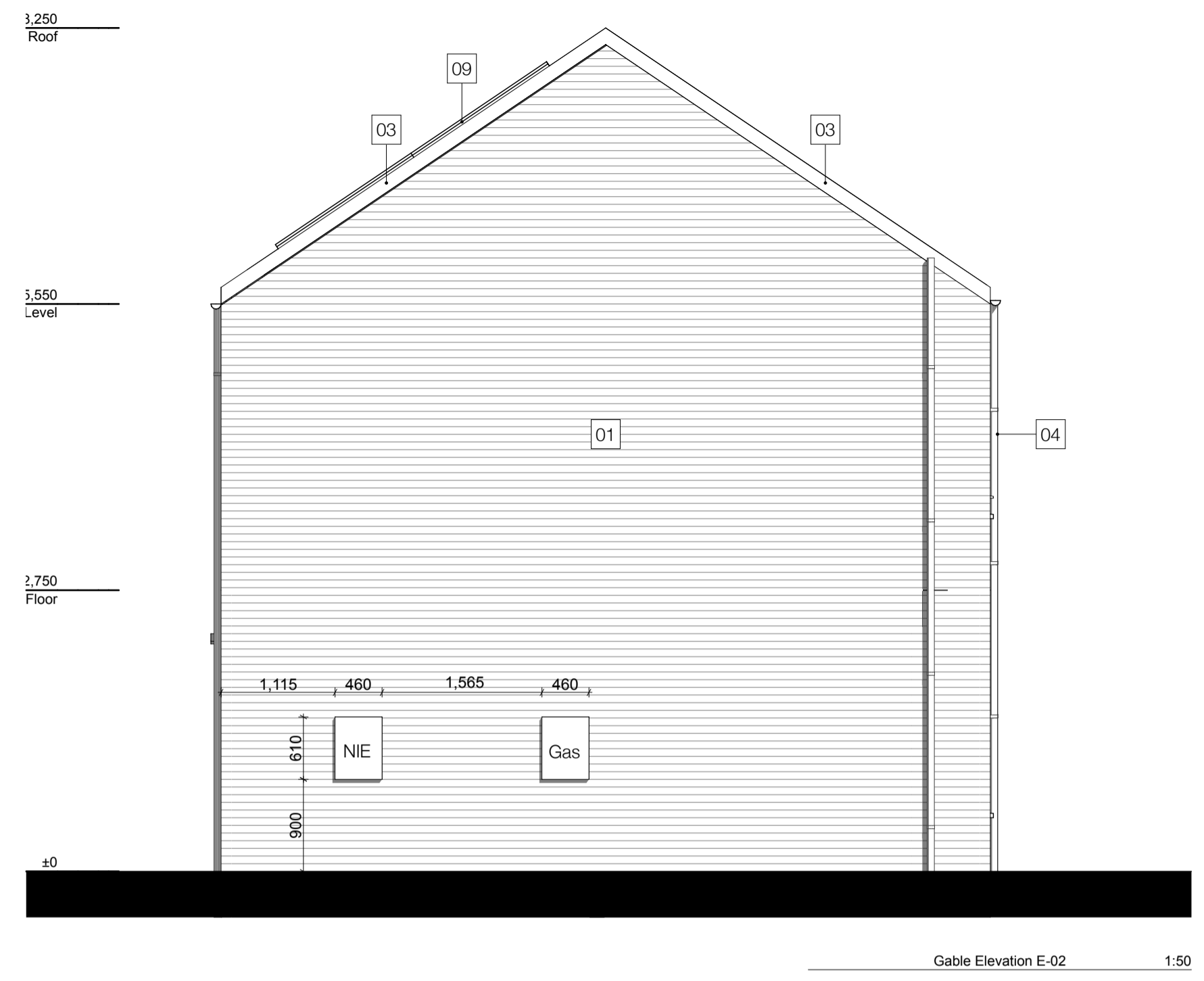


NOTES

- Check all dimensions on site. Do not scale from this drawing.
- Report discrepancies and / or omissions to Hall Black Douglas.
- This drawing is copyright of Hall Black Douglas UK, see title panel for date of creation.
- This drawing is project specific and confidential. No part is to be used or copied in any way without the express prior consent of Hall Black Douglas. Hall Black Douglas can accept no liability for content or accuracy of any information provided on this drawing which has been supplied by third party surveyors or consultants.



House Type B2 - 3P/2B
Social Housing Semi-detached Units

- Materials:**
- 01. Buff facing brick
 - 02. Dark grey PVC-U window frames
 - 03. Dark grey concrete interlocking roof tiles
 - 04. Dark grey aluminium rain water goods
 - 05. Obscured glazing
 - 06. Dark grey timber and aluminium composite door
 - 07. Precast concrete cill
 - 08. Brick Feature Panel
 - 09. Solar Panels

Storage Provision

GF Store 01	1.11 m ²
GF Store 02	0.30 m ²
1F Store 01	0.87 m ²
Total Storage	2.28 m ²
1F Linen Store	0.39 m ²

NO.	AMENDMENT	DATE	BY	CHECKED
Radius Housing				
CLIENT				
Newhill Whiterock Road, Co. Antrim				
PROJECT				
HT B2 Elevations				
DRAWING				
		1:50	08.11.21	
		SCALE	DATE	
6018-GA-031-00		MT	RH	
DRAWING NUMBER	REVISION	DRAWN	CHECKED	

HALL BLACK DOUGLAS
Architects
152 Albertbridge Road
Belfast BT5 4GS

hallblackdouglas.com
028 9045 0681