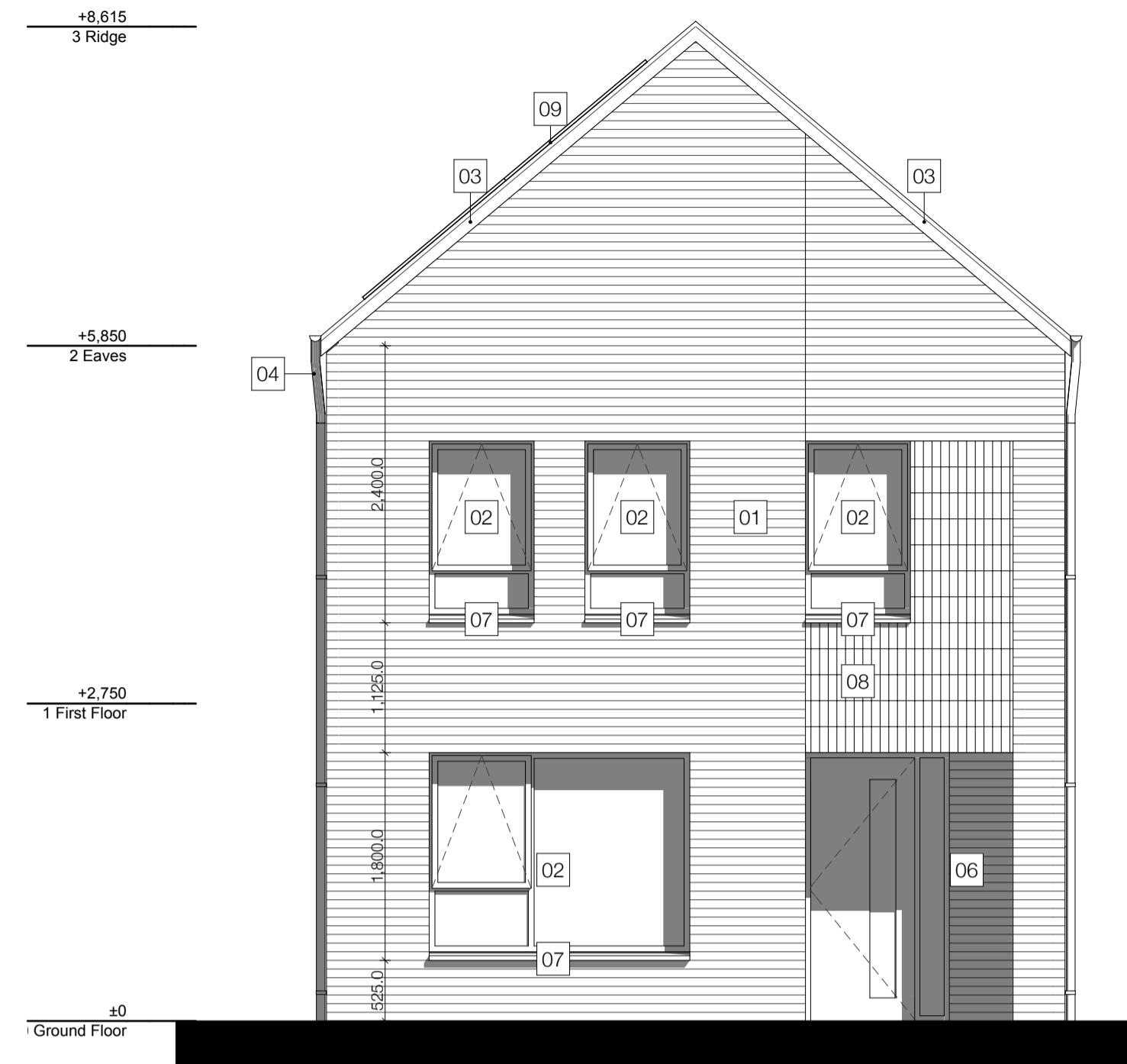
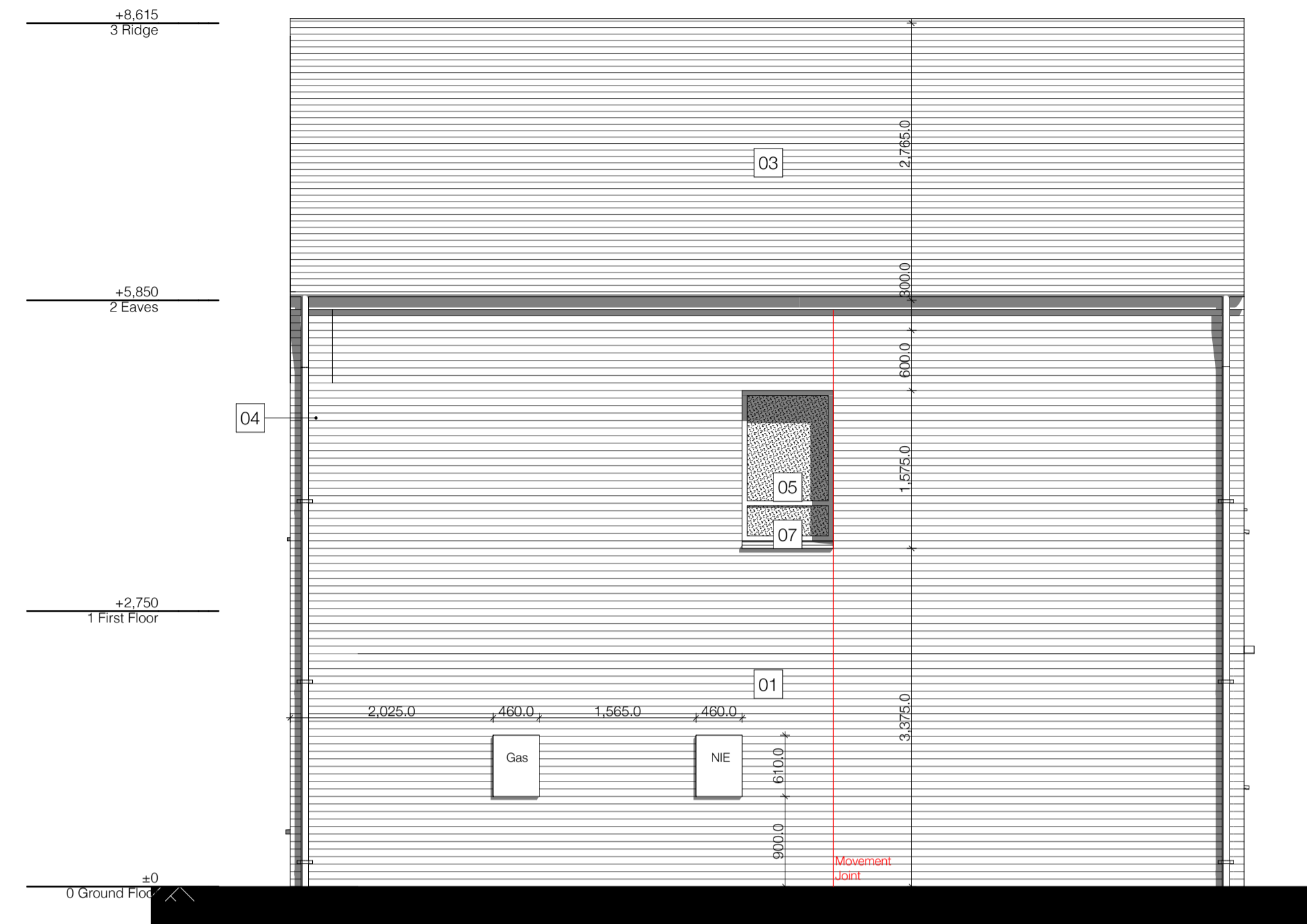


NOTES

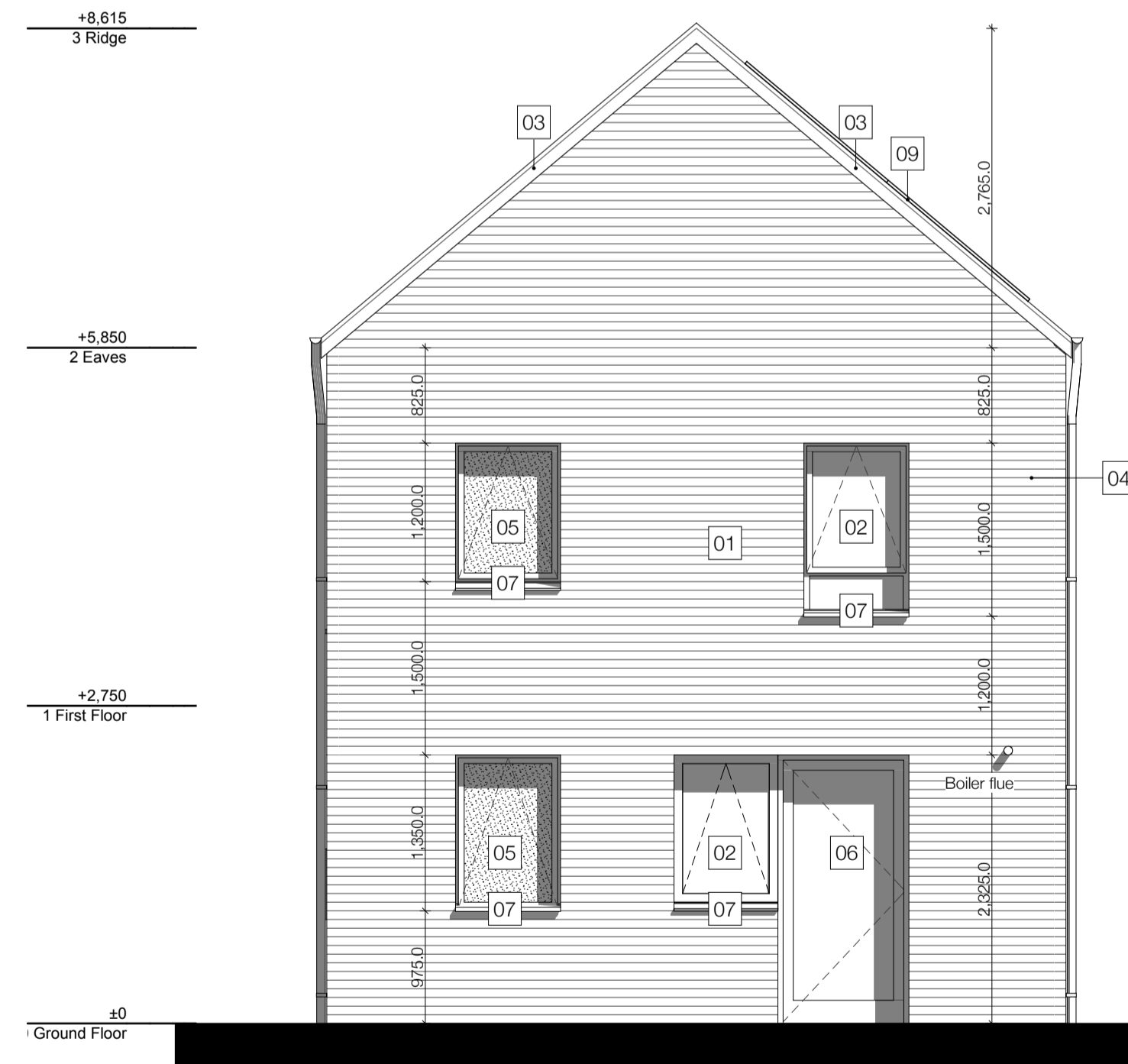
- Check all dimensions on site. Do not scale from this drawing.
- Report discrepancies and / or omissions to Hall Black Douglas.
- This drawing is project specific and confidential. No part is to be used or copied in any way without the express prior consent of Hall Black Douglas. Hall Black Douglas can accept no liability for content or accuracy of any information provided on this drawing which has been supplied by third party surveyors or consultants.



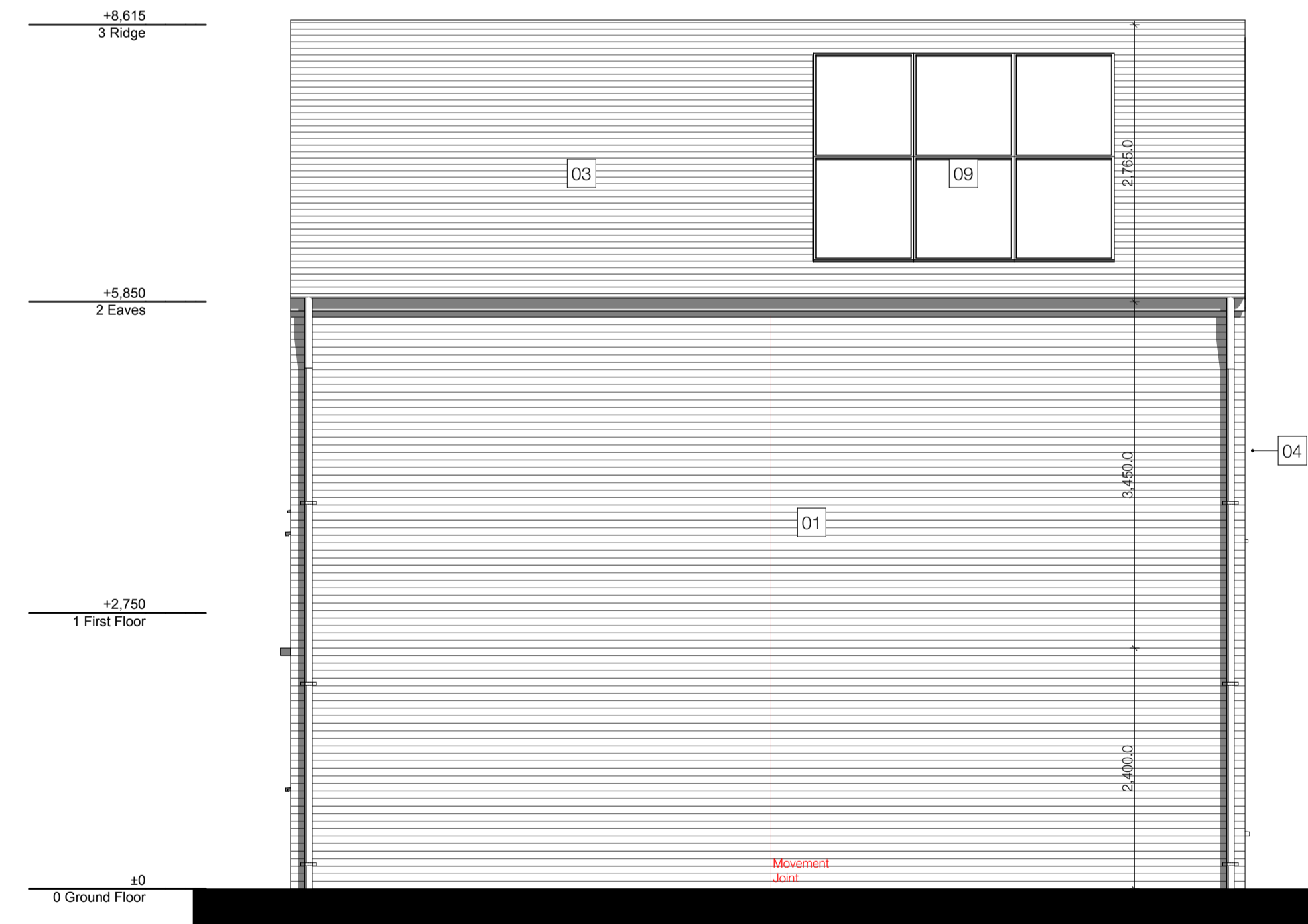
E01 - Front Elevation 1:50



E03 - Gable Elevation 1:50



E04 - Rear Elevation 1:50



E02 - Gable Elevation 1:50

House Type C1 - 5P/3B
Social Housing Detached Unit

Materials:

- 01. Buff facing brick
- 02. Dark grey PVC-U window frames
- 03. Dark grey concrete interlocking roof tiles
- 04. Dark grey aluminium rain water goods
- 05. Obscured glazing
- 06. Dark grey timber and aluminium composite door
- 07. Precast concrete sill
- 08. Brick Feature Panel
- 09. Solar Panels

NO.	AMENDMENT	DATE	BY	CHECKED
Radius Housing				
CLIENT				
Newhill Whiterock Road, Co. Antrim				
PROJECT				
HT C1 Elevations				
DRAWING				
		1:50	08.11.21	
		SCALE	DATE	
6018-CA-061-00		MT	RH	
DRAWING NUMBER	REVISION	DRAWN	CHECKED	