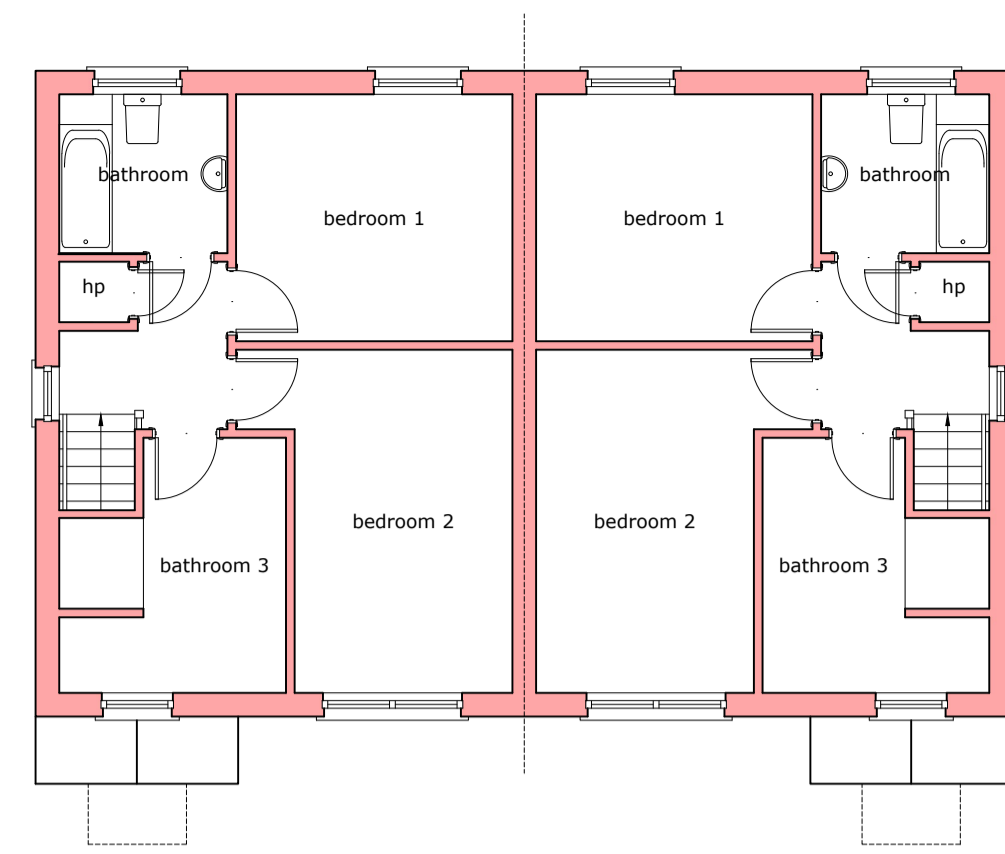


ground floor plan
type A
5 person 3 bedroom semi-detached
gross floor area - 96.74m²



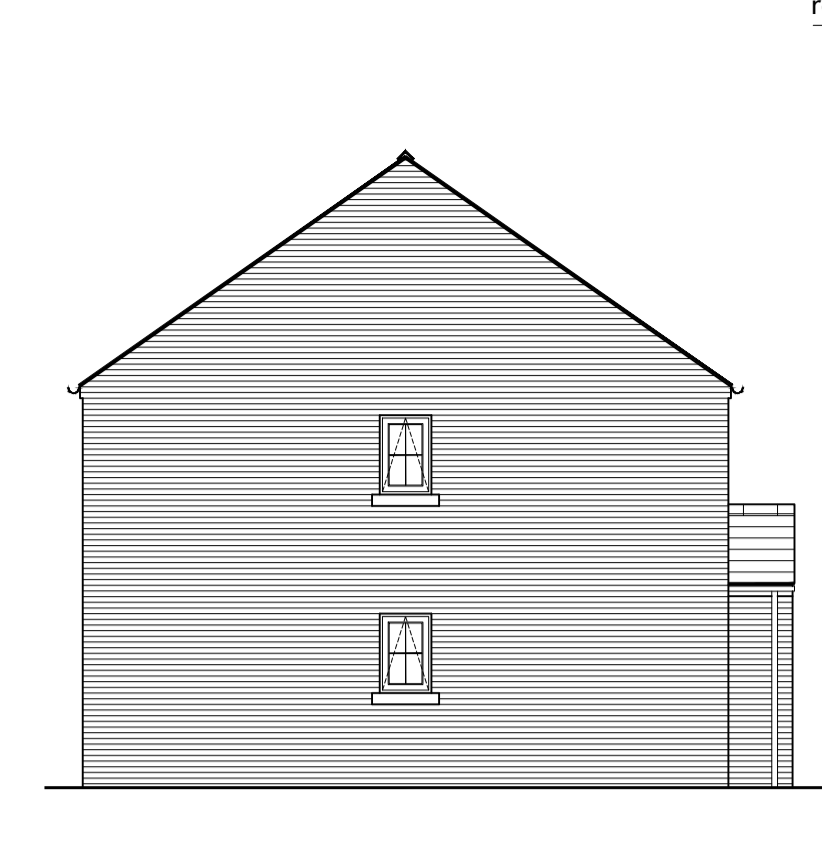
first floor plan



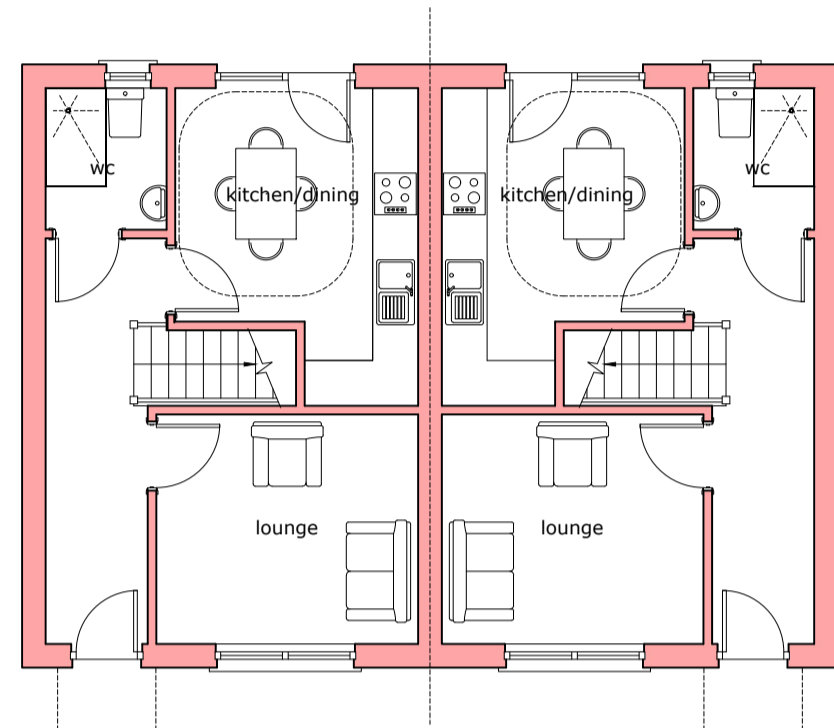
front elevation



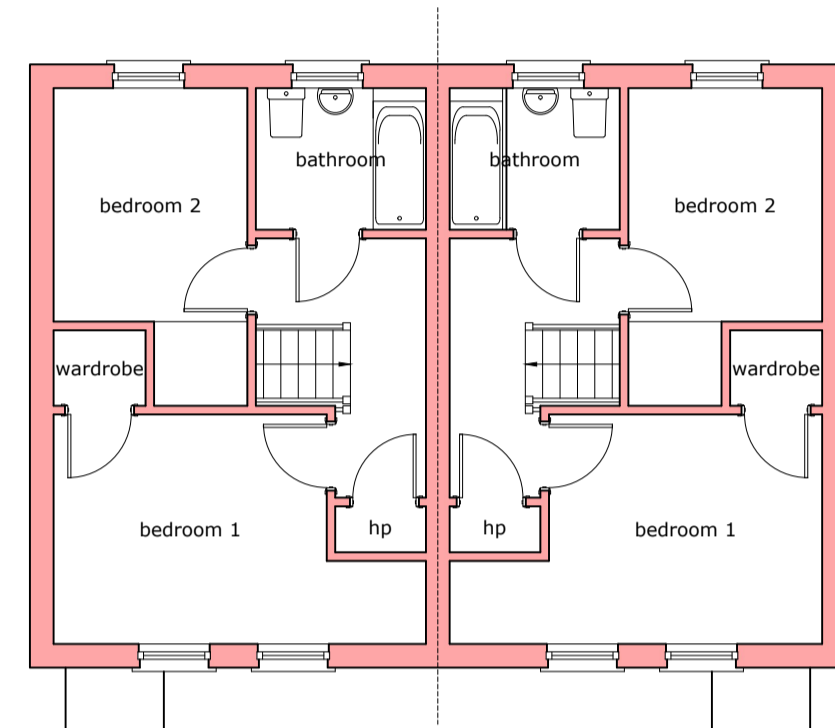
rear elevation



side elevation



ground floor plan
type B
3 person 2 bedroom semi-detached
gross floor area - 72.42m²



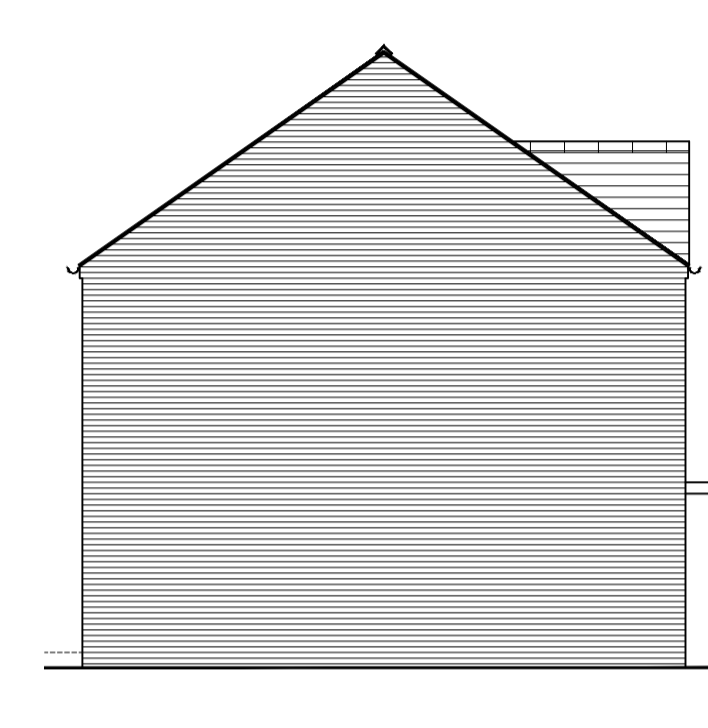
first floor plan



front elevation



rear elevation



side elevation

FINISHES:

Roof:

Concrete interlocking roof tiles -
colour grey

Walls:

Select buff facing brick with soldier
course head to openings as indicated
Concrete sills with slooted end

Rainwater goods:

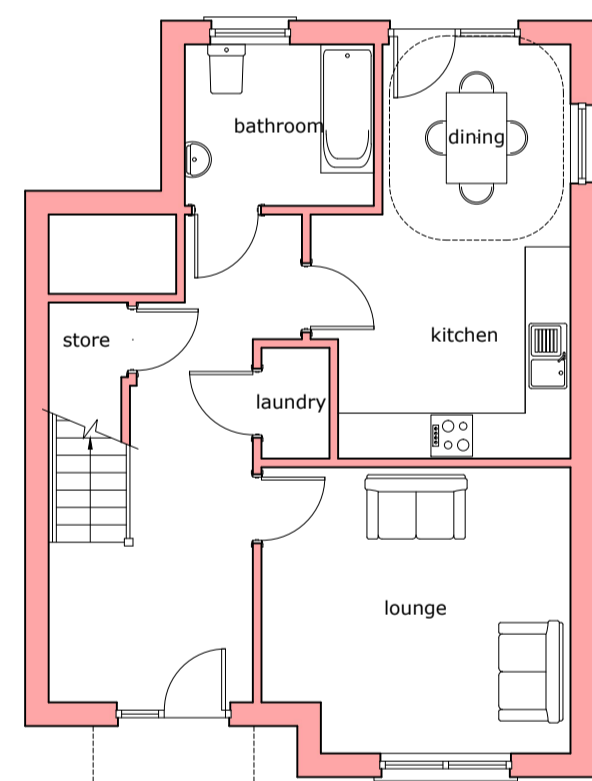
uPVC gutter and downpipes -
colour black

Windows:

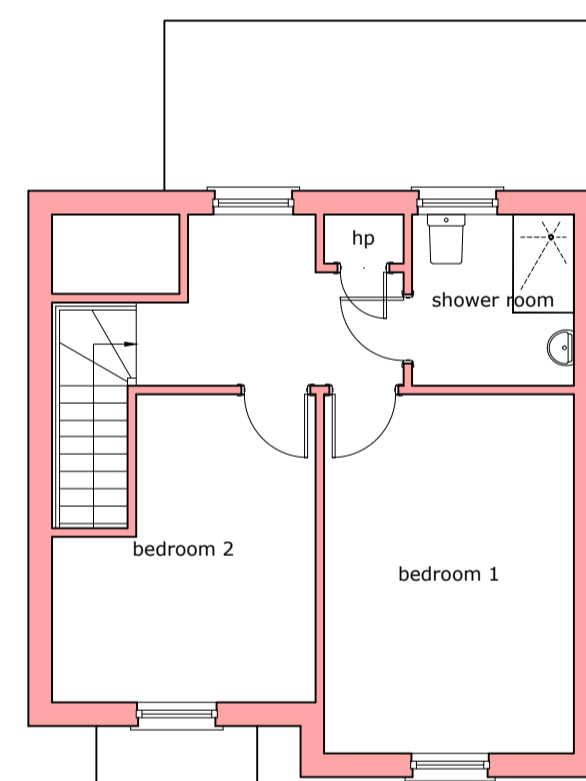
uPVC double glazed -
colour grey

Doors:

Composite hardwood -
colour tbc



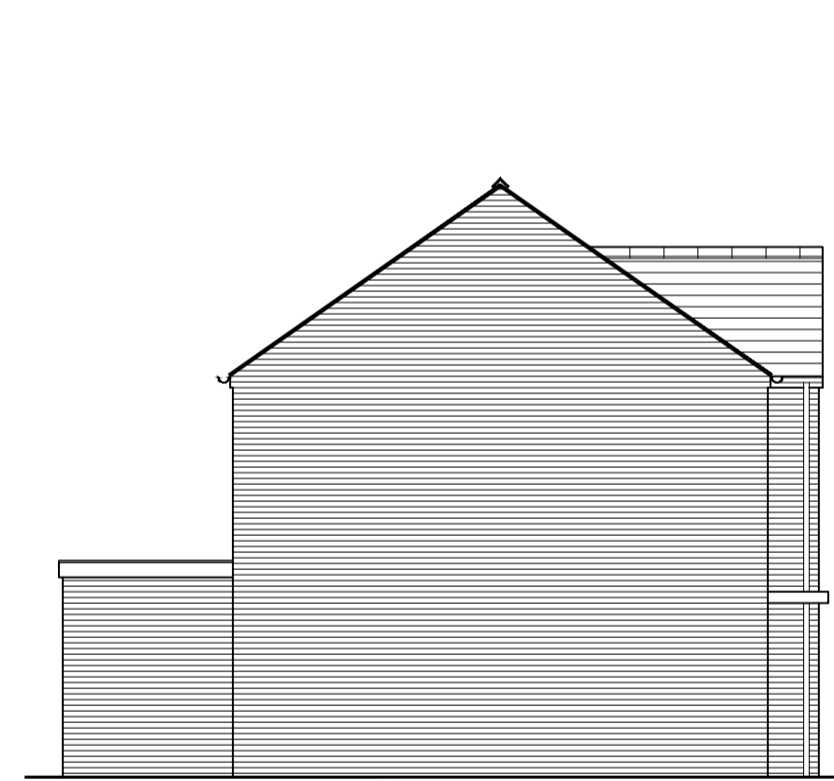
ground floor plan
type C
3 person 2 bedroom detached special wheelchair accessible
gross floor area - 105.02m²



first floor plan



front elevation



side elevation



rear elevation



side elevation



CARRICKMACSTAY
DEVELOPMENTS LTD

the
designworks
studio

t/f. 028 3855 2724
m. 07801 151 202
info@thedesignworksstudio.com
www.thedesignworksstudio.com

21 Annagora Road
Portadown
Co. Armagh
BT62 4JE

project: Residential development at
112 Comber Road
Ballygowan
for Carrickmacstay Developments Ltd

title: Proposed house types

drawing no: 1389 - PL02 date: Oct 2021
page/scale: A1 @ 1:100 drawn by: GO

this drawing, its design, content and concept are protected by copyright. It must not be copied or used by any third parties without our written permission

