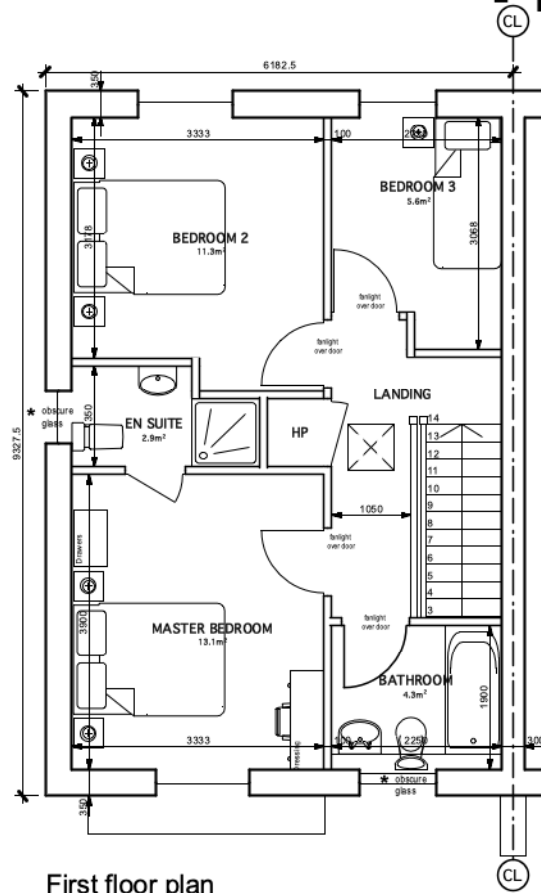
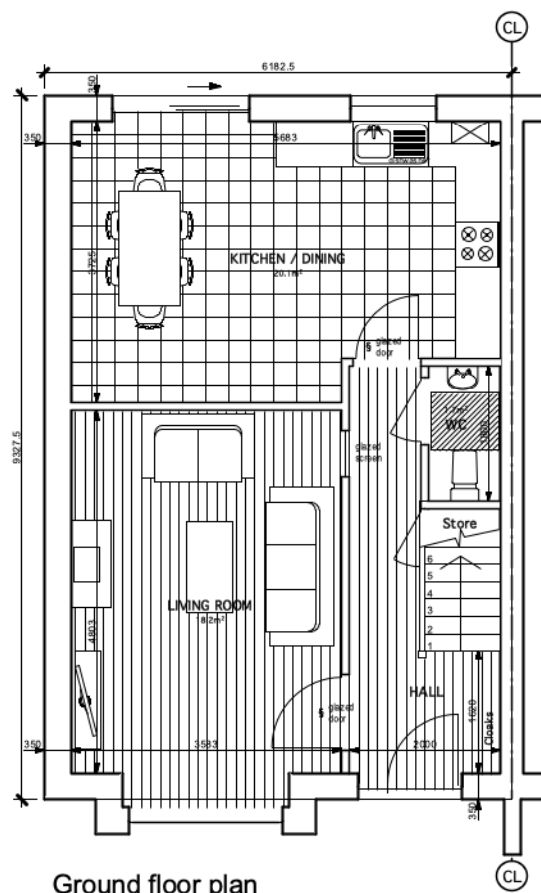


ALL DIMENSIONS TO BE CHECKED ON-SITE. PRIOR TO COMMENCEMENT. ANY DISCREPANCIES/OMMISSIONS TO BE HIGHLIGHTED TO ARCHITECT IMMEDIATELY.  
 RPP ARCHITECTS LTD TAKE NO RESPONSIBILITY FOR THIRD PARTY SURVEY INFORMATION, CONTAINED IN THIS DRAWING.  
 THIS DRAWING TO BE READ IN CONJUNCTION WITH CIVIL AND STRUCTURAL ENGINEERS DRAWINGS/INFORMATION & SPECIFICATIONS.  
 THIS DRAWING IS COPYRIGHTED © TO RPP ARCHITECTS LTD. & PREPARED FOR USE BY OUR CLIENT ONLY. IT MAY NOT BE USED, MODIFIED, REPRODUCED OR RELIED UPON BY THIRD PARTIES, EXCEPT AS AGREED WITH RPP ARCHITECTS LTD.

REVISION HISTORY

REV	DESCRIPTION	DATE

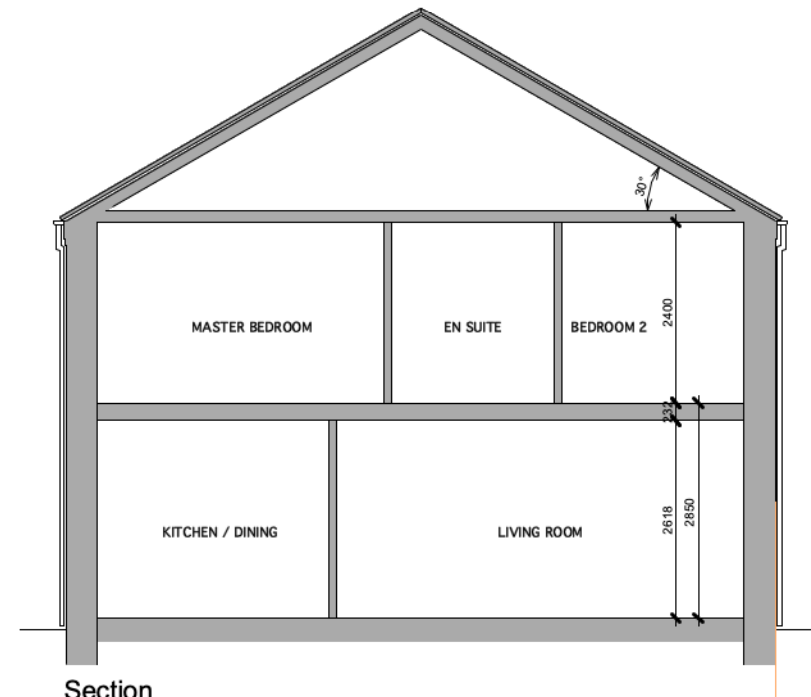
- info -



**FINISHES**

- Walls - clay facing brick with corbelled eaves detail & painted render bays
- Roof - concrete tile with photovoltaic panels
- Windows & patio doors - uPVC framing
- External doors - stained hardwood
- Rainwater goods - uPVC

**HOUSETYPE A 5P3B**  
 GF - 538ft² (50.0m²) approx internal area  
 FF - 527ft² (49.0m²) approx internal area  
 Total - 1,065ft² (99.0m²)



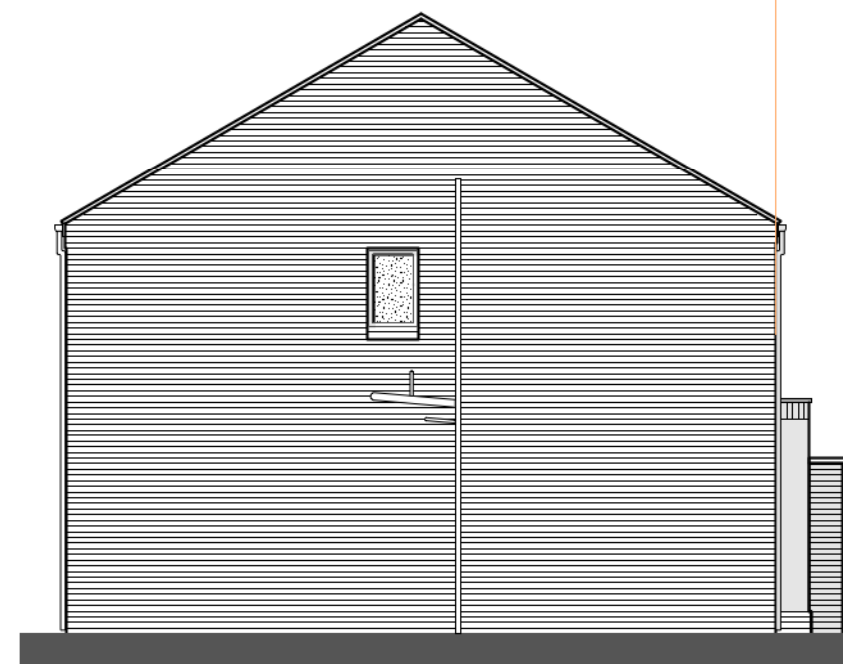
Section



Front elevation



Rear elevation



Gable elevation

RPP REFERENCE NO. <b>2695</b>	CLIENT <b>View Point Developments</b>
PROJECT <b>54 Saintfield Road, Lisburn</b>	

DRAWING: <b>Type A1 Plans, Section &amp; Elevations</b>
--

**RPP**  
ARCHITECTS

**BELFAST**  
 155-157 DONEGALL PASS  
 BELFAST  
 BT7 1DT  
 T 028 9024 5777  
 EMAIL: INFO@RPPARCHITECTS.CO.UK

**L'DERRY**  
 18 CLARENDON ST  
 L'DERRY  
 BT48 7ET  
 T 028 7136 2782  
 WEB: RPPARCHITECTS.CO.UK

SHEET SIZE	SCALE(S)	DRAWN BY	CHECKED BY	STATUS CODE	REVISION	
A3	1:100	RS	PMcG	---	--	
PROJECT	ORIGINATOR	VOLUME/SYSTEM	LEVEL/LOCATION	TYPE	ROLE	NUMBER
2695	RPP	A1	ZZ	DR	A	16-001

2695-Housetypes\_amended\_following\_Viewpoint\_comments.vwx