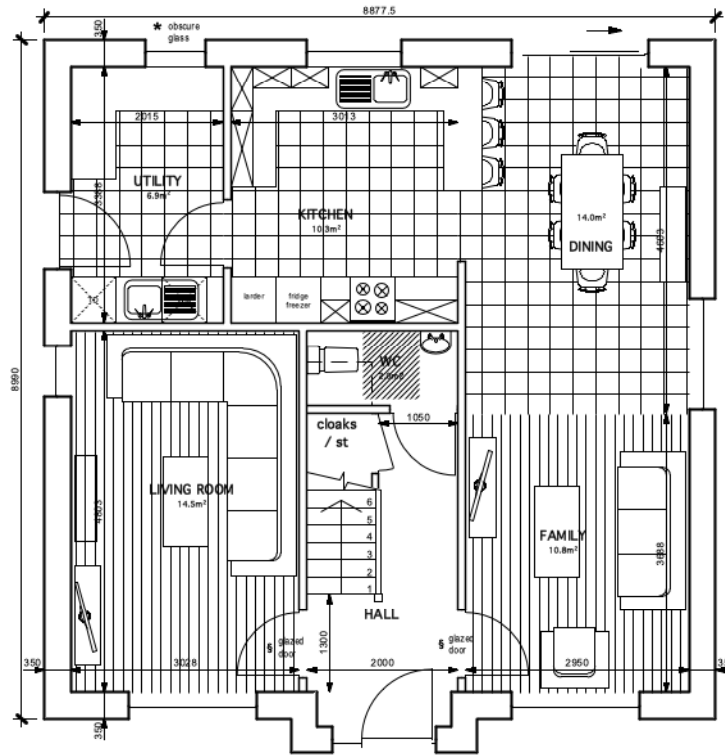


ALL DIMENSIONS TO BE CHECKED ON-SITE. PRIOR TO COMMENCEMENT. ANY DISCREPANCIES/OMMISSIONS TO BE HIGHLIGHTED TO ARCHITECT IMMEDIATELY.
 RPP ARCHITECTS LTD TAKE NO RESPONSIBILITY FOR THIRD PARTY SURVEY INFORMATION, CONTAINED IN THIS DRAWING.
 THIS DRAWING TO BE READ IN CONJUNCTION WITH CIVIL AND STRUCTURAL ENGINEERS DRAWINGS/INFORMATION & SPECIFICATIONS.
 THIS DRAWING IS COPYRIGHTED © TO RPP ARCHITECTS LTD. & PREPARED FOR USE BY OUR CLIENT ONLY. IT MAY NOT BE USED, MODIFIED, REPRODUCED OR RELIED UPON BY THIRD PARTIES, EXCEPT AS AGREED WITH RPP ARCHITECTS LTD.

REVISION HISTORY

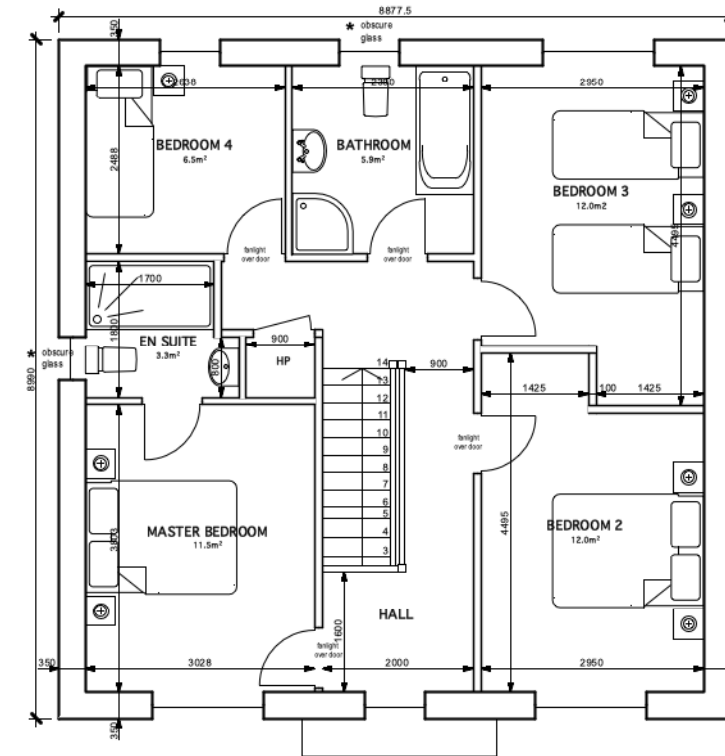
REV	DESCRIPTION	DATE
-----	-------------	------

- info -

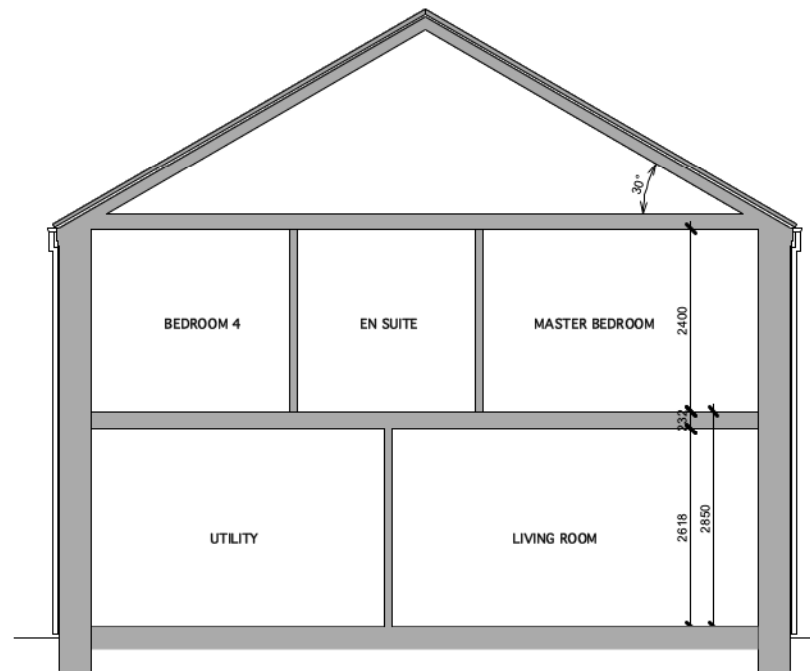


Ground floor plan

HOUSETYPE C
 GF - 738ft² (68.5m²) approx internal area
 FF - 729ft² (67.7m²) approx internal area
 Total - 1,467ft² (136.2m²) 7P4B



First floor plan



Gable elevation

RPP REFERENCE NO. 2695	CLIENT View Point Developments
PROJECT 54 Saintfield Road, Lisburn	

DRAWING: Type C Plans & Section

RPP
ARCHITECTS

BELFAST
 155-157 DONEGALL PASS
 BELFAST
 BT7 1DT
 T 028 9024 5777
 EMAIL: INFO@RPPARCHITECTS.CO.UK

L'DERRY
 18 CLARENDON ST
 L'DERRY
 BT48 7ET
 T 028 7136 2782
 WEB: RPPARCHITECTS.CO.UK

SHEET SIZE A3	SCALE(S) 1:100	DRAWN BY RS	CHECKED BY PMcG	STATUS CODE ---	REVISION --
PROJECT 2695	ORIGINATOR RPP	VOLUME/SYSTEM C	LEVEL/LOCATION ZZ	TYPE DR	ROLE A
					NUMBER 16-0002

2695-Housetypes_amended_following_Viewpoint_comments.vwx