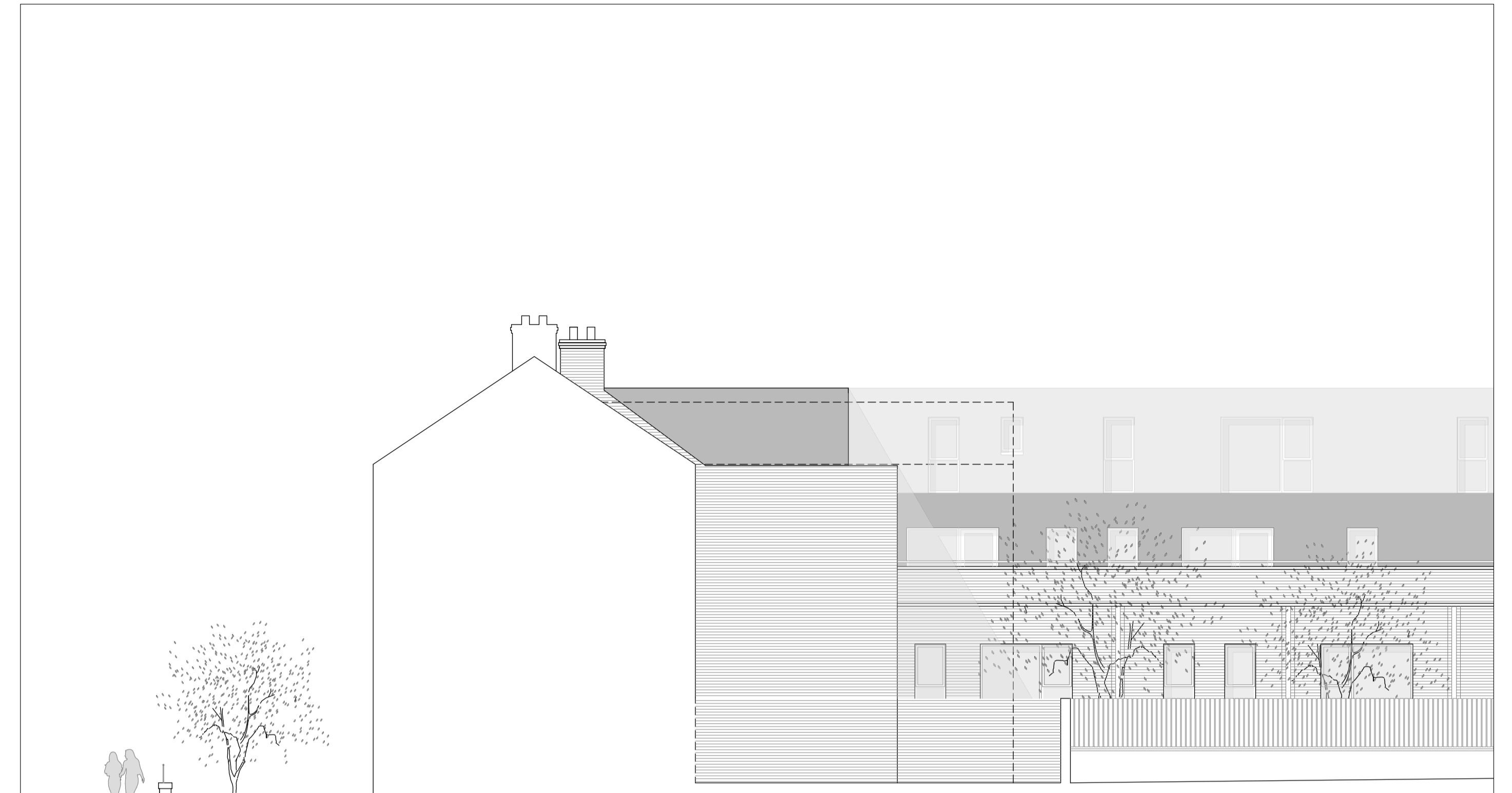




--- EXISTING OUTLINE OF 49 TATES AVENUE

WEST GABLE ELEVATION

scale 1:100



EAST GABLE ELEVATION

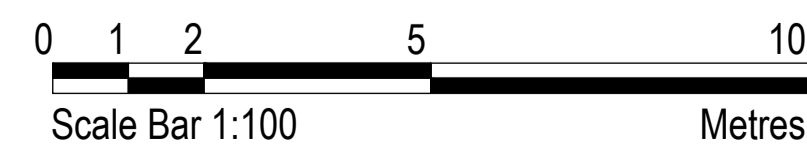
scale 1:100



NORTH ELEVATION

scale 1:100

MATERIALS
 EXTERNAL WALLS - RED/BUFF BRICK
 WINDOWS & DOORS - uPVC DOUBLE GLAZED.
 ENTRANCE DOORS - TIMBER
 RAIN WATER GOODS - uPVC (COLOUR BLACK)
 ROOF - TILES (THRUTONE SLATE COLOUR BLACK)
 RECESSED TOP FLOOR - PELICOLOR (COLOUR GREY)
 DORMER WINDOWS - RED BRICK & TILES (THRUTONE SLATE COLOUR BLACK)



PLANNING

PLANNING	revision: Rev A Building adjusted to reflect NREHA requirements	AUG 21	client: NEWPARK HOMES	project no: 21/17	date: JUN '21	scale: 1/100 @ A1	McGIRR ARCHITECTS LTD <small>ARCHITECTS • INTERIORS</small> 670 Ravenhill Road BELFAST BT6 0BZ T 028 9064 8880 F 028 9064 8881 E info@mcgirrarchitects.com
	drawing no.: L09		revision: A	<small>All rights reserved. All drawings and written material remain copyright and the intellectual property of the architect and may not be published, used or distributed without written consent of the architect.</small>			
	drawing title: APARTMENT BLOCK A & B GABLE ELEVATIONS & NORTH ELEVATION						