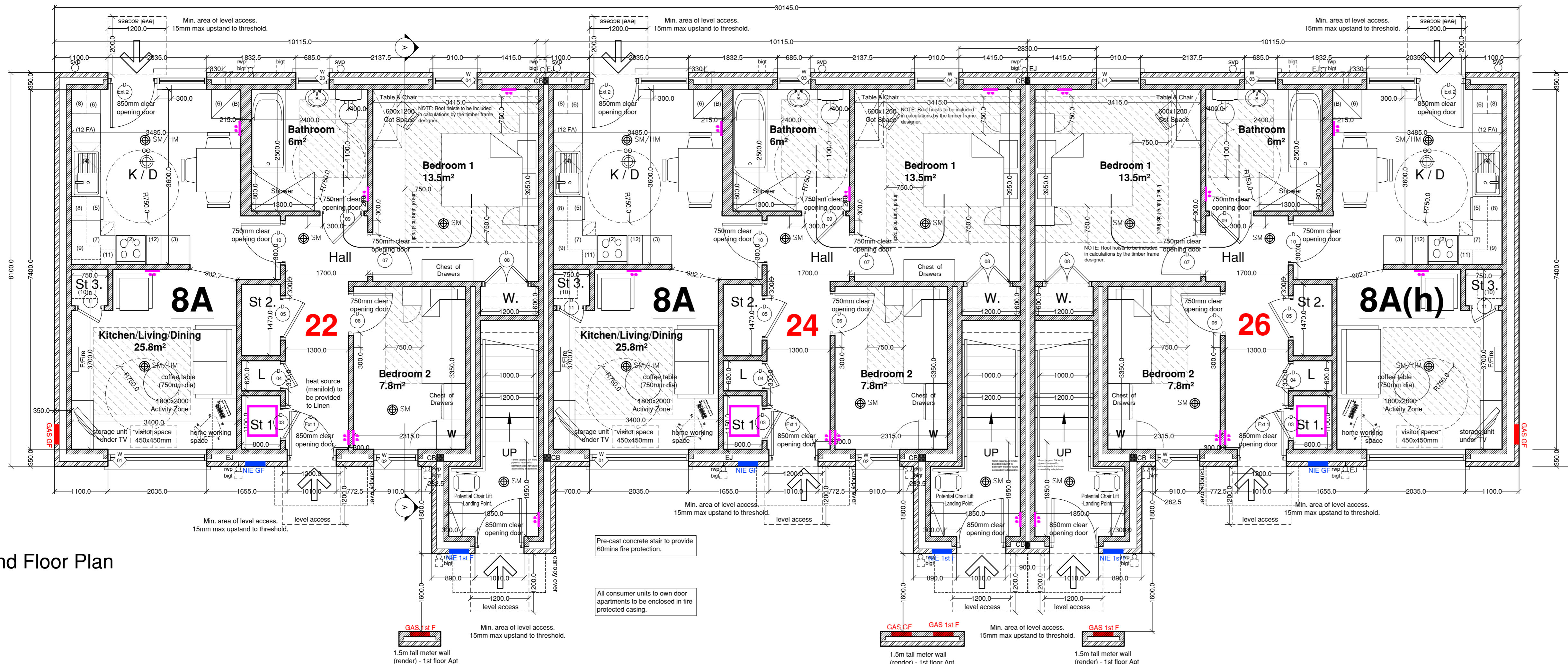


First Floor Plan



Ground Floor Plan

# HOUSE TYPES 8A, 8A(h), 8B & 8B(h) 3P/2B APARTMENT (own door access - PLOTS 22 - 27)

**PLOT NO.S - 22, 24 & 26** (Floor Area = 66.7sqm / HAG Area Band 60-65sqm)  
KITCHEN UNITS & APPLIANCE SPACES (HOUSE TYPES 8A(h))  
3 PERSON, 2 BEDROOM

Room	Area (sqm)	Area (sqft)	Volume (m³)	Volume (cu ft)
REQUIRED	1	1	1	1
PROVIDED	1	1	1	1

**PLOT NO.S - 23, 25 & 27** (Floor Area = 66sqm + 6.3sqm private stair / HAG Area Band 60-65sqm)  
KITCHEN UNITS & APPLIANCE SPACES (HOUSE TYPES 8B(h))  
3 PERSON, 2 BEDROOM

Room	Area (sqm)	Area (sqft)	Volume (m³)	Volume (cu ft)
REQUIRED	1	1	1	1
PROVIDED	1	1	1	1

**Storage (Plots 22, 24 & 26)**

Store	Area (sqm)
Store 01	0.88sqm
Store 02	1.17sqm
Store 03	0.26sqm
<b>Total Required</b>	<b>2.31sqm</b>
<b>Total Provided</b>	<b>2.31sqm</b>

**Storage (Plots 23, 25 & 27)**

Store	Area (sqm)
Store 01	0.85sqm
Store 02	0.94sqm
Store 03	0.39sqm
<b>Total Required</b>	<b>2.18sqm</b>
<b>Total Provided</b>	<b>2.18sqm</b>

**PROPOSED EXTERNAL FINISHES:**  
**ROOF:** Roof to be grey/black coloured flat concrete slab.  
**RAINWATER GOODS:** Upvc gutters with upvc downpipes (colour black).  
**FACED & SOFFIT:** Upvc fascia and soffit (colour black).  
**WALLS:** Grey brick piers. Two Brk Brk with white smooth render walls as indicated on elevations.  
**CEILING:** Plaster concrete.  
**WINDOWS/DOORS:** Store to design composite external door with (colour of door foil). Secure by design windows and doors (with internal beading). Upvc double glazed windows, colour grey.  
**CANOPY:** UPVC lightweight flat canopy - colour black/grey.

**REVISIONS**

REV.	DESCRIPTION	BY	CHK
A	Amendments per feedback	MM	MC
B	Amendments per feedback	MM	MC
C	Amendments per feedback	MM	MC

**PROJECT:** DRUMGULLION AVENUE, NEWRY SOCIAL HOUSING

**JOB NO.:** 2346 | **WORKSTAGE:** 04 | **DRAWING NO.:** 110 | **REVISION:** C

**CLIENT:** GEDA

**DRAWING TITLE:** HOUSE TYPES 8A & 8B PLANS  
**DPG FUNDING DRAWING**

**SCALE:** 1:50 at A4 | **DATE:** 11.25 | **DISCIPLINE:** PT | **CHECKED:** PT

**BOYD**  
THE BOYD PARTNERSHIP  
CHARITABLE ARCHITECTS LLP